

F·O·R·E<sup>TM</sup>



FOUNDATION for OHIO RIVER EDUCATION

## FORE's Mission

- Education empowers communities to value and protect their watersheds. The Foundation for Ohio River Education teaches people of all ages in the Ohio River Basin to become environmental stewards through hands-on programs that get people on the water and engaged in preserving the cultural, ecological, and economic value of our rivers. FORE is a 501(c)(3) non-profit supporting organization of the Ohio River Valley Water Sanitation Commission.

## About ORSANCO

- The Ohio River Valley Water Sanitation Commission (ORSANCO), was established on June 30, 1948 to control and abate pollution in the Ohio River Basin. ORSANCO is an interstate commission representing eight states and the federal government. Member states include: Illinois, Indiana, Kentucky, New York, Ohio, Pennsylvania, Virginia, and West Virginia.



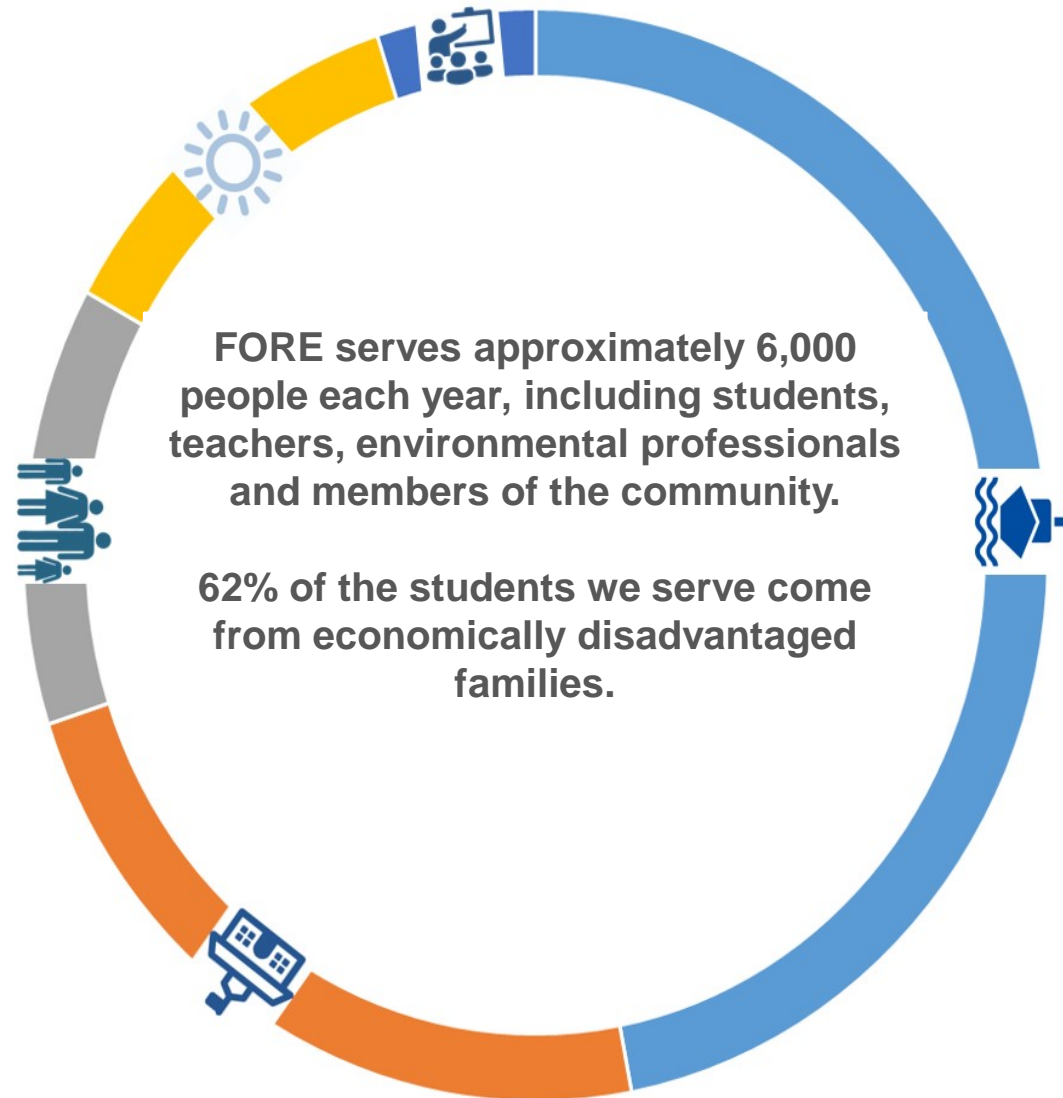
## About FORE

- FORE is a 501c(3) non-profit, 509(a)(3) supporting organization of ORSANCO.
- We rely on foundation grants, corporate donations/sponsorships, individual donations, and program fees to sustain our operating costs.
- FORE also collects and administers funds that are raised by ORSANCO each year to conduct River Sweep. Residual funds that are not used for River Sweep can be used to support FORE's education programs.

# About FORE



# Programs



- 47% River REACH Program
- 23% Classroom Presentations
- 13% Public Outreach Program
- 12% Summer Camp Programs
- 5% Professional Development Programs

# #NATUREisHERE

- In order for Environmental Education programs to stay relevant in the future, “we must expand the definition of environment to include the places where kids live, learn and play. We must embrace the teachable moments that urban spaces offer. And we must train a diverse young cohort of leaders and educators from urban areas to do this critical work in cities.”<sup>1</sup>

- 1. Klasky, Ben. “Environmental Education: Deep in the Heart of the City.” Children and Nature Network, 06 Apr. 2015, <https://www.childrenandnature.org/2015/04/06/environmental-education-deep-in-the-heart-of-the-city/>.



# River REACH

*A floating  
classroom  
program for the  
Ohio River*





# River Research Education and Adventure Charters (River REACH)

*Floating Classroom on the Ohio River*





# Students perform the same monitoring methods as ORSANCO scientists to assess the Ohio River.





# Water Quality Station

## Parameters Measured:

Water Temperature Change  
Dissolved Oxygen (DO)  
DO % Saturation  
Turbidity  
Conductivity  
Nitrate  
Ortho and Total Phosphate  
*E. Coli*

## Instruments Used:

Hydrolab/YSI Meter  
UV Spectrophotometer  
Turbidimeter  
Coliscan



# Ohio River Fish

Students use an activity based on ORSANCO's **modified Ohio River Fish Index (mORFI<sub>n</sub>)** to assesses the fish community.

The mORFIN examines the number of fish species, the types of species and the ecological structure of the fish community at our sampling site through a series of metrics.



# Ohio River Plankton

Students learn how algae are indicators of water quality and what role phytoplankton and zooplankton play in the Ohio River food web.



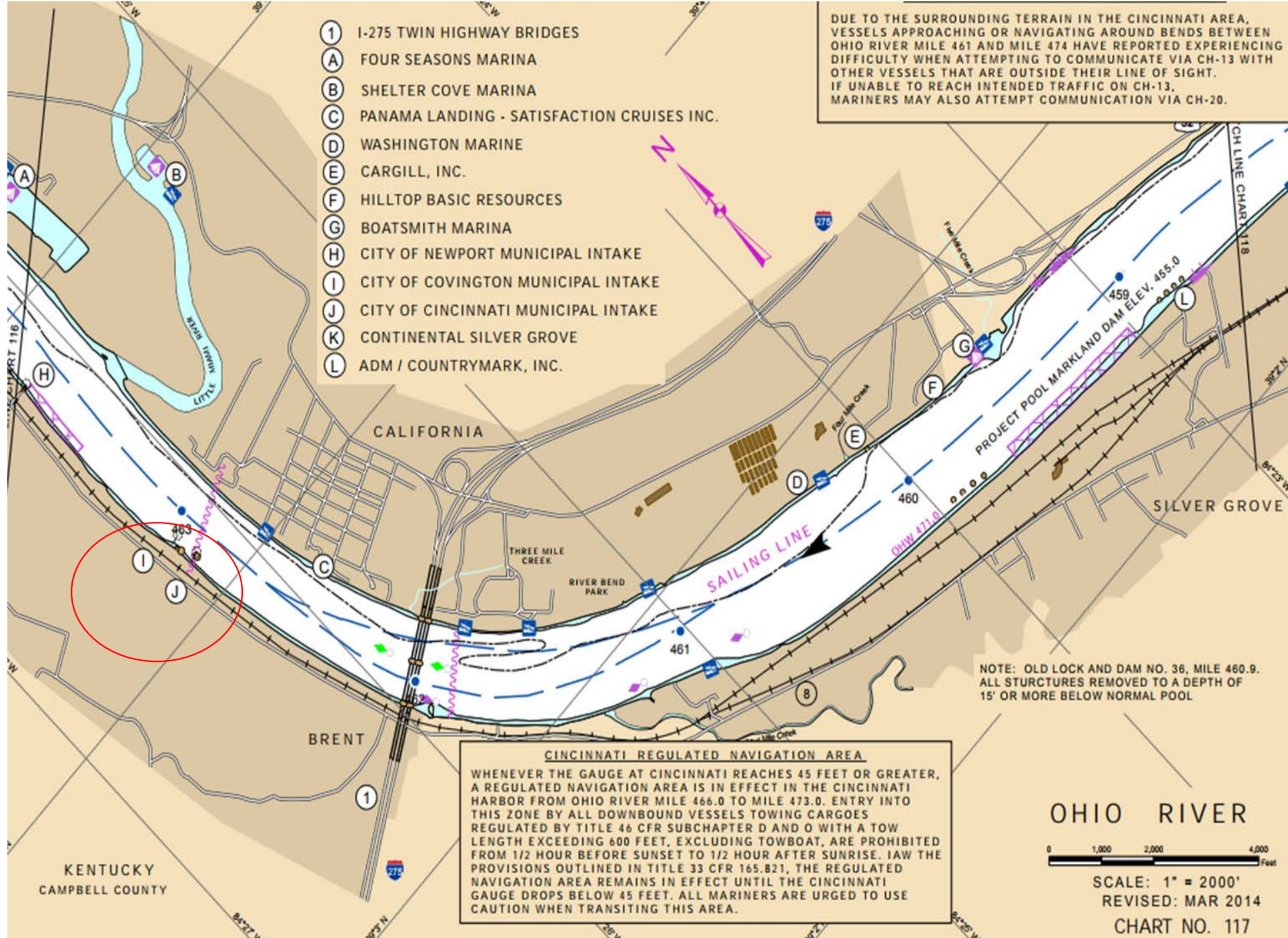




# Macroinvertebrates

Students process Hester-Dendy plates and use a **Pollution Tolerance Index** to assess the macroinvertebrate community at our sampling site.







Manhattan Bathing Beach, Dayton, Ky.





Students in  
the STREAM

#NATUREisHERE



# Students in the STREAM *Curriculum*

- Classroom activities focus on mapping watersheds using United States Geological Survey (USGS) materials.
- Schoolyard activities focused on assessing impervious surfaces, stormwater runoff and other sources of non-point pollution.
- Poetry, art and creative writing incorporated into classroom activities and data presentation.
- Water testing events.
- Clean-up activities in the creek or the schoolyard.
- FORE provides materials and training for teachers.



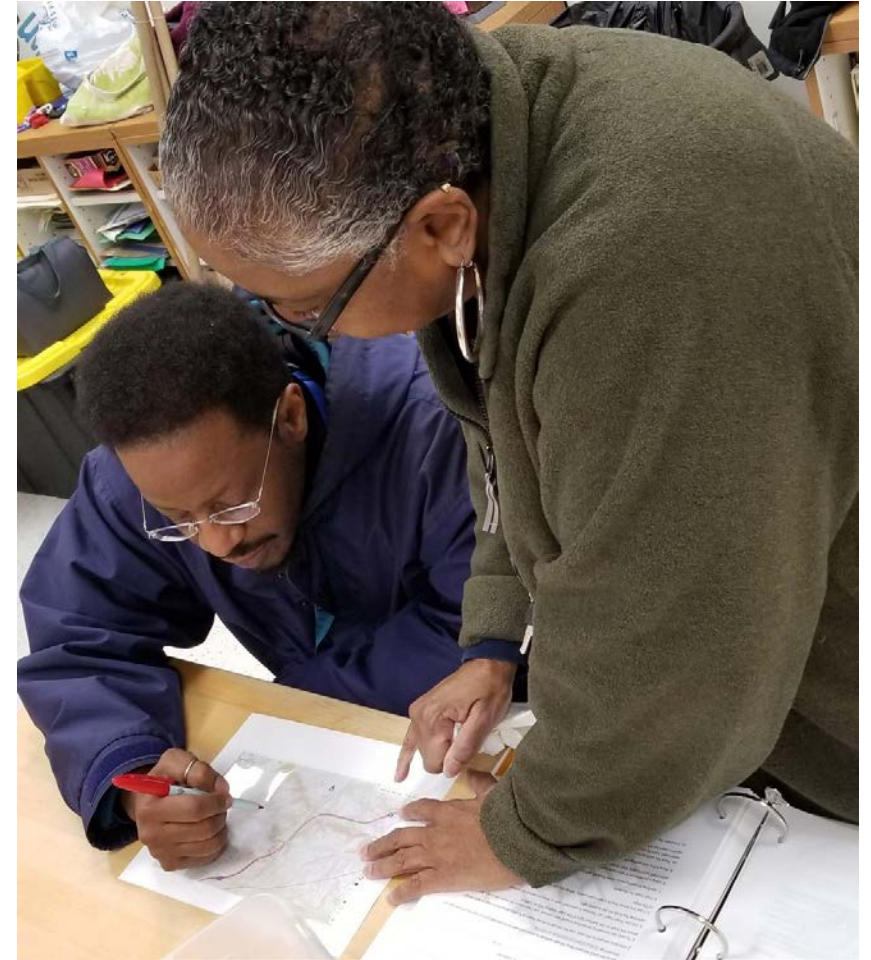


# NAAEE Conference

October 18, 2019



# Professional Development for Educators





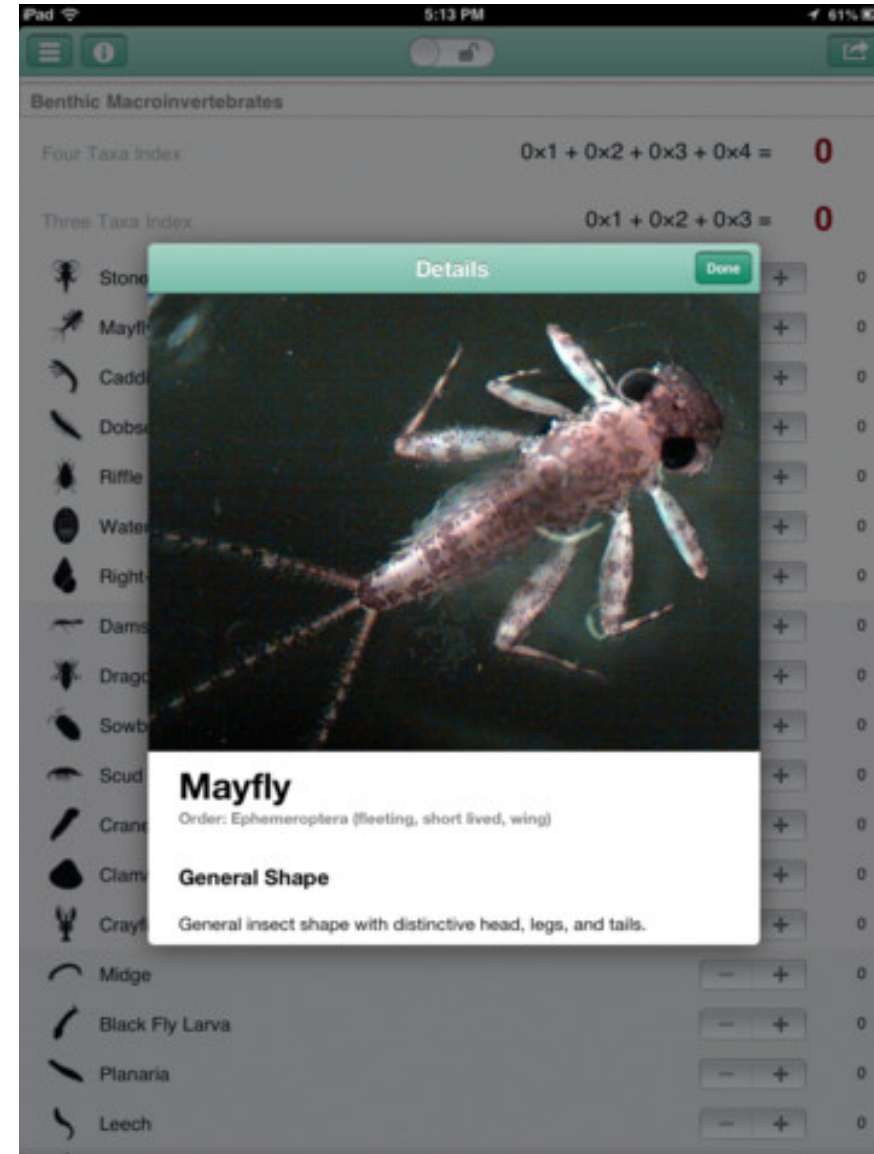
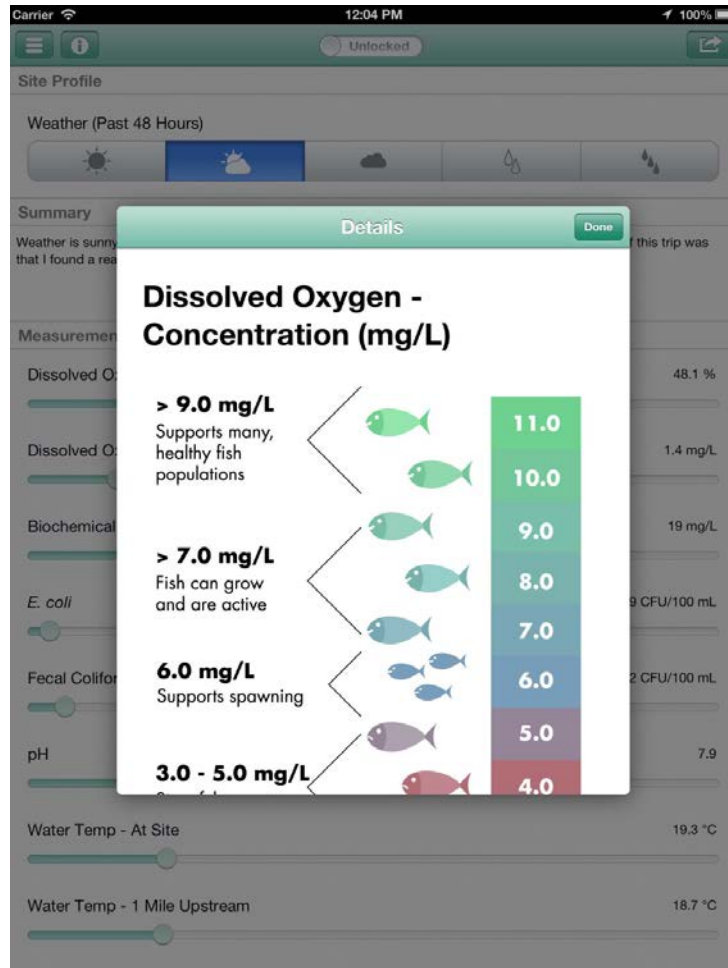
# OutREACH



# Public Workshops for Farmers and Landowners







# FORE/NKU Collaborations

## Summer Camps





HarmfulAlgaeBloom  
Version 6.0 (2)  
Michael Waters

OPEN

Send Feedback

### What to Test

Manual classifier.

### Description

Harmful Algae Bloom Application

### Information

Developer	Michael Waters
Release Date	Jan 19, 2017
Version	6.0 (2)
Size	53.7 MB
Expires	Mar 20, 2017, 10:24 AM
Compatibility	Requires iOS 9.3 or later. Compatible with iPhone, iPad and iPod touch.
iMessage	No

Developer Website



# HAB App





# Ohio River Sweep





## **FORE's Income Sources**

- **River Sweep carryover**
- **Foundation Grants**
- **Corporate Sponsorships**
- **Annual Appeal**
- **River REACH Program Income**

# FORE's Main Income Sources

<b>EXPENDITURES</b>					<b>Budget</b>
	Staff Payroll				\$66,165
	Benefits				\$10,603
	Liability Insurance				\$365
	Meetings/Travel				\$1,045
	Training/Conferences				\$1,195
	Associations and Memberships				\$300
	Supplies				\$3,865
	Equipment				\$9,900
	Printing and Reproduction				\$1,290
	Contractual Services				\$135,000
	River REACH Floating Classroom Field Trips	\$20,000			
	River Sweep River Volunteer Clean-Up Event	\$115,000			
	Fundraising Activities				\$1,000
	Legal & Audit Fees				\$1,500
<b>Total Program Cost</b>					<b><u>\$232,228</u></b>
<b>FUNDING SOURCES</b>					
	Estimated Carryover From Previous Fiscal Year				\$215,000
	Estimated Foundation Contributions				\$50,000
	Estimated Corporate Contributions				\$12,000
	Estimated Individual Contributions				\$1,600
	Estimated Contributions Ohio River Sweep Volunteer Clean-Up Event				\$120,000
	Estimated Earned Income (Floating Classroom Program Participant Fees)				\$5,500
	Estimated In-Kind Services				\$6,500
	Interest Income				\$25
<b>Total Funding</b>					<b><u>\$410,625</u></b>

# Strengths and Weaknesses

- Our programs are solidly developed and provide educational experiences that go beyond a one-day field trip. They have been sustained over a long period of time.
- Feedback from some grant sources indicate that our writing skills are good. Goals, benchmarks and assessment strategies are strong.
- We are good at cultivating relationships.
- Due to the nature of our River REACH and Students in the STREAM programs, we don't reach large numbers of people each year; grant money doesn't get a lot of "bang for the buck".
- We are not consistent when trying to engage corporate sponsors. We are not schmoozers.
- We are not consistent with reporting.
- We are not good at tooting our own horn in innovative ways.

# Top Foundation Supporters

- **LL Nippert Foundation**
- **Duke Energy Foundation**
- **Greater Cincinnati Foundation-**
  - Harrison Foundation
  - Daniel and Susan Pfau Foundation
- **Louise Taft Semple Foundation- Ignite Philanthropy**
- **Mayerson Student Philanthropy Fund**
- **PNC Advisors**
  - Sutphin Foundation
  - Reakirt Foundation
- **Kinder Morgan Foundation**
- **Ingram Foundation**
- **Grace Harvie Charitable Trust**

## Top Corporate Supporters

- Cincinnati Bulk Terminals
- Cincinnati Barge and Rail
- American Commercial Lines
- Johnson Controls

## Past Events

- Riverboat events
- Riversweep 25 Volunteer Appreciation Event at Behringer-Crawford Museum
- All-for-One night at Bircus Brewing





## Grant Research

- Update list of local and national Foundations whose giving priorities match with FORE and who value our type of programming.
- Find better ways to underscore the value of our top education programs, even if they don't provide a lot of “bang for the buck”.
- Find novel ways of connecting with these foundations outside of just making phone calls and directly applying.

## Electronic Philanthropy

- How to better use social media and which types are most appropriate for our constituents.
- How to get more followers.
- Develop an appropriate communication strategy and timeline based on our current staff capabilities.
- Identify and implement a suitable, low-budget, on-line fundraising platform (donate button).

# Events

- Identify low-overhead venues/fundraising events that will appeal to a wide audience, beyond our constituents.
  - I.e., Paint and Pint
- How boost funds and connections made at low-overhead events.
- Identify breweries, restaurants or other venues for fundraising nights.
  - Deadlow Brewing
- Develop a strategy for building potential attendees at future, more large-scale events.
- Explore novel ideas for future, large-scale events or events we can “tie” into.

Thank You!



FOUNDATION for OHIO RIVER EDUCATION

[www.riverlearning.org](http://www.riverlearning.org)